



GAT MONTHLY MEMBERSHIP PROGRESS REPORT

Results as of: 6/30/2022

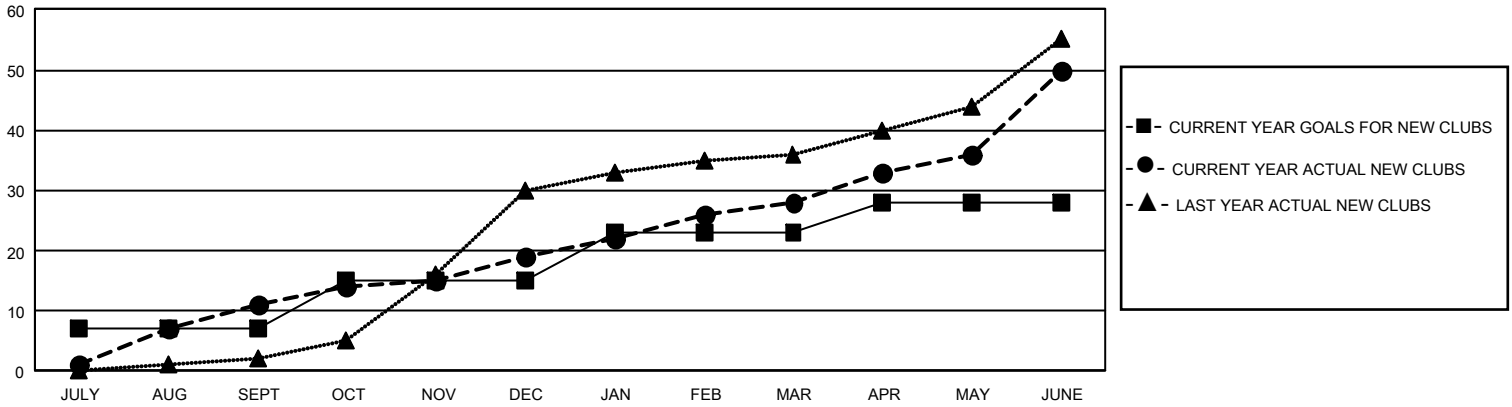
GMT Constitutional Area 3, Group B

REPORT DOES NOT INCLUDE CLUBS IN UNDISTRICTED AREAS.

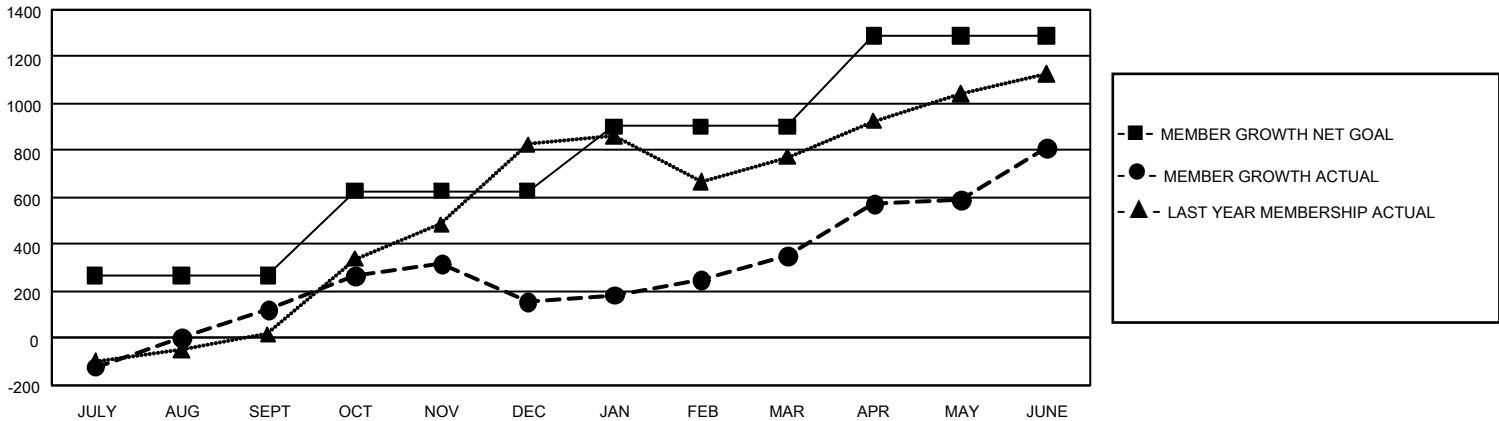
Clubs			
RESULTS FOR 2021-2022			
QUARTER	NEW CLUB GOAL	NEW CLUBS	DROPPED CLUBS
JULY/AUG/SEPT	21	11	4
OCT/NOV/DEC	24	8	1
JAN/FEB/MAR	24	9	2
APR/MAY/JUNE	15	22	0

Members			
RESULTS FOR 2021-2022			
QUARTER	MEMBER GROWTH NET GOAL	MEMBER GROWTH ACTUAL	DROPPED MEMBERS ACTUAL (including transfers)
JULY/AUG/SEPT	268	556	417
OCT/NOV/DEC	360	552	503
JAN/FEB/MAR	275	425	222
APR/MAY/JUNE	385	1,174	684

GOALS AND ACTUAL NEW CLUBS CUMULATIVE



GOALS AND ACTUAL MEMBERS CUMULATIVE



DROPPED CLUBS: 6	287 CLUBS OF 541 ADDED 1 OR MORE NEW MEMBERS	<u>GENDER DISTRIBUTION</u>	
<u>DROPPED MEMBERS</u>		MALE	6,258 (40.50%)
DECEASED	146	FEMALE	9,192 (59.49%)
CLUB CANCELLED	108	NON BINARY	0 (0.00%)
OTHER	1,572	PREFER NOT TO ANSWER	1 (0.01%)
TOTAL	1,826	TOTAL FAMILY UNIT MEMBERS	3,730
	CLICK HERE FOR CUMULATIVE MEMBERSHIP DATA	FAMILY MEMBERS PAYING HALF DUES	2,228